

## MVCC Medium Voltage Conductor Covers

### FEATURES

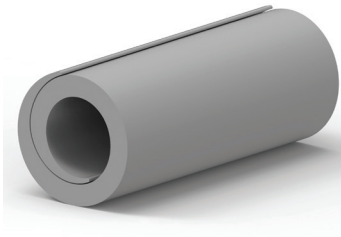
- Made from non-tracking silicone material  
TE's Raychem MVCC is suitable for harsh medium voltage outdoor environments
- Covers are split for easy installation
- Four sizes available which fit conductor diameters ranging up to 1.75 inch

### APPLICATIONS

- Substation
- Suitable for up to 25 kV phase to ground

### BENEFITS

- ♦ Provide high quality electrical insulation for substation leads and jumpers
- ♦ Flexibility allows installation on tight bends
- ♦ Specifically designed to prevent flashover caused by contact with birds and animals



### PRODUCT SELECTION INFORMATION

Catalog Number	Conductor Diameter Use Range UOM: inches (mm)	Color	Supplied Length UOM: feet (M)
<b>MVCC-10/.40 (B100)</b>	up to .450 (11)	Red	2 pieces at 50 (15.24)
<b>MVCC-G-10/.40 (B100)</b>	up to .450 (11)	Gray	2 pieces at 50 (15.24)
<b>MVCC-19/.75 (B50)</b>	0.50-0.75 (12-19)	Red	2 pieces at 25 (7.6)
<b>MVCC-G-19/.75 (B50)</b>	0.50-0.75 (12-19)	Gray	2 pieces at 25 (7.6)
<b>MVCC-25/1.0 (B25)</b>	0.75-1.125 (19-28)	Red	1 piece at 25 (7.6)
<b>MVCC-G-25/1.0 (B25)</b>	0.75-1.125 (19-28)	Gray	1 piece at 25 (7.6)
<b>MVCC-45/1.75 x 4 (B24)</b>	1.125-1.75 (28-44)	Red	6 pieces at 4 (1.2)
<b>MVCC-G-45/1.75 x 4 (B24)</b>	1.125-1.75 (28-44)	Gray	6 pieces at 4 (1.2)

### ADDITIONAL PRODUCT INFORMATION

<sup>a</sup> EDR-5461 Medium voltage Conductor Cover Electrical Testing and EDR-5498 Material test

## BCIC-Angle Medium Voltage Conductor Cover

### FEATURES

- Modular/ Wraparound product design
- Retrofit insulation on 3 to 4 inch angle busbars
- Insulation when existing equipment cannot be dismantled

### APPLICATIONS

- TE's Raychem BCIC-Angle BUS Cover is suitable for indoor and outdoor use

### BENEFITS

- ♦ Quick and easy to install
- ♦ Over-lapped sections together, produce increased bus bar coverage
- ♦ The BCIC angle bus cover will provide flashover protection up to 35 kV.



### PRODUCT SELECTION INFORMATION

Catalog Number	Color	Busbar in (mm)	Supplied Length feet	Standard Pack pieces
<b>BCIC-ANGLE-4X48 (B6)</b>	Red	3-4 (75-100)	4	6
<b>BCIC-G-ANGLE-4X48 (B6)</b>	Gray	3-4 (75-100)	4	6

### ADDITIONAL PRODUCT INFORMATION

- EDR-5594 BCIC-ANGLE-4X48 Electrical Testing